



# Saint Therese Parish

9525 W Bluemound Rd • Milwaukee, WI 53226  
 Phone (414) 771-2500 • Fax (414) 771-2410  
[sainttheresemilwaukee.org](http://sainttheresemilwaukee.org) • [info@sainttheresemilwaukee.org](mailto:info@sainttheresemilwaukee.org)

## January 20th, 2008

We are Saint Therese Catholic Church, a community of believers who walk together by faith in Christ Jesus and strive hand-in-hand to live as God's people.

### Parish Staff

**Parish Director**  
**Dr. Alexandra Guliano** ext. 14  
[drguliano@sainttheresemilwaukee.org](mailto:drguliano@sainttheresemilwaukee.org)

**Assisting Priest**  
 Rev. Hugh Birdsall, SDS

**Help-out Priest**  
 Rev. Norm Oswald

**Administrative Assistant**  
 Courtney Falk ext. 11  
[courtney@sainttheresemilwaukee.org](mailto:courtney@sainttheresemilwaukee.org)

**Bookkeeper**  
 Lisa Vallone ext. 17  
[vallonel@sainttheresemilwaukee.org](mailto:vallonel@sainttheresemilwaukee.org)

**Christcare Minister**  
 Barbara Heinz ext. 13  
[bhheinz@sainttheresemilwaukee.org](mailto:bhheinz@sainttheresemilwaukee.org)

**Pastoral Musician**  
 Elterine Biggers ext. 15  
[jankowe@sainttheresemilwaukee.org](mailto:jankowe@sainttheresemilwaukee.org)

Sterling Biggers, Parish Musician

**Coordinator of Early Childhood Catechesis and Sacraments**  
 Christine Reinders ext. 18  
[reindersc@sainttheresemilwaukee.org](mailto:reindersc@sainttheresemilwaukee.org)

**Coordinator of Parish Catechesis**  
 Cathy Smith ext. 20  
[cathy.smith@sainttheresemilwaukee.org](mailto:cathy.smith@sainttheresemilwaukee.org)

**Maintenance Team** ext. 16  
 Toni Timm  
 Mike Davis

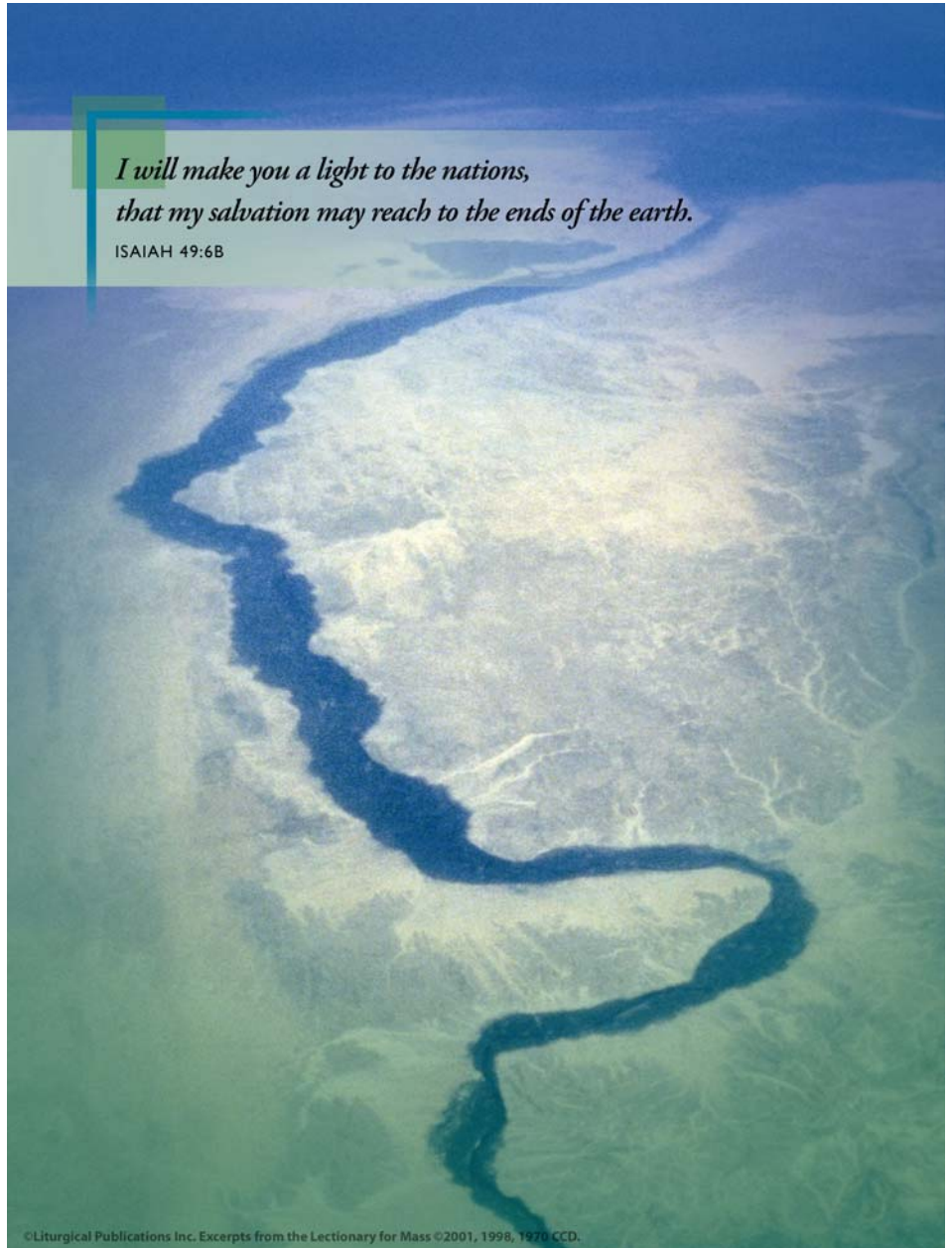
**Ministers**  
 All the Members of the Parish

**For Parish Emergencies, please call the Parish Office and follow the instructions for the 24-hour emergency line.**



*I will make you a light to the nations,  
 that my salvation may reach to the ends of the earth.*

ISAIAH 49:6B



©Liturgical Publications Inc. Excerpts from the Lectionary for Mass ©2001, 1998, 1978 CCD.

### Mass Schedule

Saturday: 5:00PM  
 Sunday: 8:00AM & 10:00AM  
 Tuesday: 8:00AM  
 Friday: 7:30AM

**Liturgy of the Word  
 with Communion:**

Wednesday & Thursday: 8:00AM  
*See inside for Holy Day Schedules*

**Reconciliation:** 4:15PM — 4:45PM

1st Saturday of the Month

**Anointing of the Sick:**

2nd Full Weekend of the Month

Following Each Mass

**All Other Sacraments:**

Please call the Parish Office

*Preparation can take  
 six months or more*

### Office Hours

**Monday, Tuesday, Thursday:**

8:30AM — 4:00PM

closed 12:00PM — 12:30PM

**Wednesday:**

12:00PM — 7:30PM

closed 4:00PM to 4:30PM

**Friday:**

8:30AM to 12:00PM

## From the Desk of the Parish Director

On Monday, January 7th, approximately seventy parish members (including the Parish Council) met to discuss issues regarding the Archdiocesan Pastoral Planning Process spearheaded by Father Jim Connell, Vicar for Planning. The seventy broke into small groups of eight to ten persons and discussed and responded to the following:

♦ **Parish size:** St. Therese is one of the smaller parishes in the Archdiocese of Milwaukee. Remaining vibrant requires active participation and support from our membership. Groups were asked to discuss whether they preferred a smaller parish or whether they would rather be a part of a larger parish community where there are more members to take responsibility for support and participation. (This would result in a merger with another parish community or communities.) While several participants affirm and prefer the size of our parish, there was a significant number who are not opposed to being part of a larger parish community. However, we did not discuss the issue of merging specifically. This question would have to be discussed to clarify whether those who responded favorably to a larger community would be in favor of merging with another community.

♦ **Parish Membership Requirements:** Of our 508 parish family/units, 133 family/units do not support the parish financially or through ministry in parish ministries/groups. Groups discussed what could be done to address the 26% who do not participate in parish stewardship of time, talent, and treasure. (Actually, the percentage of participation and financial support here at St. Therese Parish is well over the national average of about 60%. Our percentage of participation and financial support is 74%.) Since our stewardship figures were not completely calculated at the time of the meeting, we had estimated that 40% of our membership did not support the parish financially or ministerially. (Thanks to the research and calculations done by Bill Hoppenjan, we now have more accurate figures!) Overwhelmingly, the group recommended personal contact and invitation to members who do not support the parish financially or ministerially.

♦ **How to Remedy Any Future Financial Deficits:** In 2006-2007, our parish ended the fiscal year with a \$15,000 deficit. Groups discussed ways in which we could remedy any financial deficits. A

request to those who currently support the parish to give an extra \$50 could have potentially wiped out the deficit for 2006-2007. (300 gifts of \$50 would have remedied the deficit.) The groups voiced that, if there is a deficit in the future, an appeal for additional funds could be made to the general parish but the group discouraged placing a dollar amount on what was requested per family/unit.

Thanks to all who attended the Town Hall Meeting. Please take the time to read the Archdiocesan Pastoral Planning handouts written by Father Jim Connell. These documents provide the basis for the Pastoral Plan that will be developed and presented to Archbishop Dolan.

Let us continue to pray for each other and for our parish community.

God bless you!

*Dr. Alexandra Guliano*



A recipe for a Happy New Year: Take twelve fine, full-grown months; see that these are thoroughly free from old

memories of bitterness, rancor and hate, cleanse them completely from every clinging spite; pick off all specks of pettiness and littleness; in short, see that these months are freed from all the past — have them fresh and clean as when they first came from the great storehouse of Time. Cut these months into thirty or thirty-one equal parts, but prepare one day at a time. Into each day, put equal parts of faith, hope, fidelity, liberality, kindness, rest, prayer, meditation, and one well-selected resolution. Put in about one teaspoonful of good spirits, a dash of fun, a pinch of folly, a sprinkling of play, and a healing cupful of good humor.

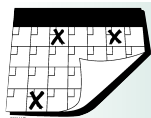
*Lord, help each of us to make this a truly New Year!*

Please remember the following in your prayers:

Margaret Anderson \* Lenore Black \* Deanna Zychowski  
Janice Corak \* Mike Costello \* David Dane \* Andy Islo  
Mike Czarnecki \* Alberta Duckhorn \* Ann Farell \* Dee Blom  
Christopher Duffy & Family \* Christian Elder \* Frank Eskra  
Lynn Gordon \* Chuck Hillyer \* Mary Stoke \* Carol Hoppenjan  
Anastasia Hubbard \* Christine Hutchins \* Garnet Jankowski  
Joachim Family \* Ken Knollenberg \* Ann Lackovic  
Ciel Maccani \* Cindy Mekka \* Millie Metz \* Andy Moehr  
Keith Hammernick \* Isaiah Montoya \* Sue Monyette  
Laverne Mucci \* Fran Schmidt \* Barbara Schmitz \* Art Bonk  
Karie Schwonke \* Carlene Siever \* Susan Sinks \* Marion Stabo  
Olga Valdovinos \* Harold Vanden Heuvel \* Maurie Wright  
Merle Weber \* Virginia Weber \* Baby Riana Wolosek

## Prayer and Worship Committee Reorganizing

Here is an opportunity to plan and prepare our liturgical celebrations and assure that our liturgical ministries are vibrant! The Prayer and Worship Committee is a standing committee of the Parish Council. To learn if serving on this committee is something in which you would be interested, please come to the reorganization meeting on Thursday, February 21st at 6:30PM in the St. Therese Room.



## Parish Events for the Week

### Sunday, January 20th

7:30AM Canticle Choir (CH)  
10:00AM Mass & LGP (CH/HH)

### Monday, January 21st

8:00PM St. Vincent dePaul Committee (LIB)

### Tuesday, January 22nd

8:30AM Bible Study Group (STR)  
8:30AM Lifelong Formation Speaker (HH)  
6:30PM First Eucharist Preparation (GLP)

### Wednesday, January 23rd

7:30PM Praise Band (CH)  
7:30PM Adult Choir (CHP)

### Thursday, January 24th

No Meetings Scheduled

### Friday, January 25th

No Meetings Scheduled

### Saturday, January 26th

No Meetings Scheduled

### Sunday, January 27th

9:15AM Adult Choir (CH)  
3:00PM Pretty Good Variety Show (HH)

CH=Church, CHP=Chapel, GLP=God's Littlest Place, GN=Good News Gathering Place, HH=Heck Hall, KIT=Heck Hall Kitchen, LIB=Library, MC=Miriam's Corner, RR=Raphael Room, STR=St. Therese Room

## Snow Removal Help Needed

With the snow season upon us, we need help with snow removal for the chapel steps and entrance during the weekdays—Tuesday through Friday by 7:00AM for our morning masses. If you can help our parish community in this way, please call Dr. Guliano in the parish office. Please help us keep our parish property and those who attend our parish safe this winter.

## Living as God's People

If you haven't been to Living as God's People lately, check out the catechetical table in the back of church and see what you've been missing. Also, check out the materials available from the Archdiocese on how to keep your children safe.

## St. Therese Book Club

Our next meeting will be on Saturday, March 15th, at 9:30AM in the Parish Library. We are reading the book, *Having Our Say: the Delany sisters' first 100 years*, by Sarah & Elizabeth Delany. Please contact Dianne Dagelen at (414) 771-1505 [diannedagelen@yahoo.com](mailto:diannedagelen@yahoo.com) if you have questions. All are welcome. See you on the Ides of March!

## St. Therese Did Name the Rooms

Thank you to all who participated in "Can You Name That Room." We had many wonderful entries, but we could only choose three. So here are the new names: The All Purpose Room will now be known as Miriam's Corner; The Catechesis Room will now be known as The Good News Gathering Place; The Second Floor Meeting Room will now be known as The Raphael Room. We are awarding one prize to Jean Marie Weber for the entry of The Good News Gathering Place. The other two winning names were submitted anonymously.

## What's in a Name?

**Raphael Room** is named in honor of one of the seven archangels named Raphael. In the book of Tobit he is known for being sent by God to heal the blindness of Tobit and the healing of Sarah who was plagued by a demon who killed any man who married Sarah. He's also the Patron Saint of happy meetings, so let's hope that room holds up!

**Miriam's Corner** is honoring the sister of Moses. In the Hebrew Bible, Miriam is referred to as a prophet. She was a daring individual who took chances not only in saving her baby brother, but also later as an adult she was looked up to working side by side with her brothers Moses and Aaron. If you would like to find out more about this great heroine, find her story in *Praying with the Women of the Bible*, written by Bridget Mary Meehan.

**The Good News Gathering Place** is appropriately named, as this room is used for adult catechesis. As part of the catechesis we are sharing the Good News of the Gospel with adults gathering to gain greater insight into the Catholic Faith.

## New ADA Approved Phone in Lobby Elevator

Thanks to the family of Gordie Watters, the memorials donated to the parish were used to purchase the ADA- (Americans with Disabilities Act) approved phone system in the lobby elevator.



## 55+ Social Club

We are collecting our annual dues for 2008—just \$5.00 per person! If you have paid your 2008 dues, you are invited to a free lunch at our meeting on Thursday, February 14th. **Reservations are required.** Dale Kuntz will be here to present his program on Fred Astaire and Ginger Rogers.

## 2007 Catholic Stewardship Appeal Final Report

The good news is that we not only reached, but exceeded our 2007 Catholic Stewardship Appeal Goal. 216 parish members donated a total of \$35,256.25 for the support of our archdiocesan ministries. 44% of our parish membership responded to this appeal. Thanks to all who contributed! And a huge thanks to Tony Ziebert, our Parish Chairperson, for promoting and leading the appeal.



## "Anything Goes" at the Fireside

Join us as we travel to the Fireside Theatre for the production of Cole Porter's musical *Anything Goes* on Sunday, April 6th. We will leave after the 8:00AM mass. The cost per person is \$70.00 and includes the show, the delicious Sunday buffet and tour bus transportation. Enjoy the show and plan on browsing the many shops at the Fireside. Reservations and money are due on March 3rd. Please call Barb Heinz in the Parish Office to make a reservation.

**Readings for the Week of January 20th**

**Second Sunday in Ordinary Time**

Sun: Is 49:3, 5-6; 1 Cor 1:1-3; Jn 1:29-34  
 Mon: 1 Sm 15:16-23; Mk 2:18-22  
 Tue: 1 Sm 16:1-13; Mk 2:23-28  
 Wed: 1 Sm 17:32-33, 37, 40-51; Mk 3:1-6  
 Thu: 1 Sm 18:6-9; 19:1-7; Mk 3:7-12  
 Fri: Acts 22:3-16 or Acts 9:1-22; Mk 16:15-18  
 Sat: 2 Tm 1:1-8 or Ti 1:1-5; Mk 3:20-21

**Third Sunday in Ordinary Time**

Sun: Is 8:23-9:3; 1 Cor 1:10-13, 17; Mt 4:12-23



**Mass Intentions for the Week**

**Tuesday, January 22nd**

7:45AM Mother of Perpetual Help Prayers  
 8:00AM †Ann Washburn

**Wednesday and Thursday**

7:45AM Rosary before Liturgy  
 8:00AM Liturgy of the Word with Communion

**Friday, January 25th**

7:30AM Joe Kleiber

**Saturday, January 26th**

5:00PM Intentions of Miska Mashoya

**Sunday, January 27th**

8:00AM †Ruth Retzlaff  
 10:00AM People of St. Therese Parish Community

**Chili Dump to Benefit *Second Harvest***

Sunday, February 3rd, is the Big Game! What better way to start the day than enjoying delicious chili with your friends at St. Therese. Following the 10:00AM Mass, there will be a pre-game chili dump to raise funds for *Second Harvest*.

There will be several types of chili along with all the fixings like cheese, noodles, and sour cream. We are attempting to get all of the food donated so all proceeds will go to *Second Harvest*. So if you have a secret family recipe for chili consider donating a pot of it or maybe some of the fixing listed above. Registration is required to ensure enough food for all! Please fill out and return the form below. The cost of this event will be \$4.00 for adults, \$3.00 for seniors and kids under age 12 with no family to pay more than \$15.00.

Remember, all the proceeds go to help feed the hungry of the greater Milwaukee area. Empty grocery bags will be handed out after each Mass on the weekend of January 26th/27th. Bring the bag back *full*, and **your chili will be free**. If you have questions, please contact Cathy Smith in the Parish Office.

Family Name \_\_\_\_\_  
 Phone (      ) \_\_\_\_\_  
 Email \_\_\_\_\_  
 I will bring \_\_\_\_\_  
 I will help:  set up     serve     clean up  
 # Adults \_\_\_\_\_ x \$4  
 # Kids \_\_\_\_\_ x \$3  
 # Seniors \_\_\_\_\_ x \$3  
 }      OR      Family Rate \$15  
 TOTAL \$ \_\_\_\_\_

<i>Thank you!</i>	<b>CHURCH SUPPORT</b>	
	<u>January 12th/13th</u> \$8365.00	<u>Sharing Sunday</u> \$1065.94

**Lenten Wednesdays—6:30PM Services**

Mark your calendars and plan to attend the Wednesday evening Lenten prayer services.  
 February 13th Stations of the Cross  
 February 20th Taize Prayer (Prayer Around the Cross)  
 February 27th Stations of the Cross  
 March 5th Taize Prayer  
 March 12th Taize Prayer  
 March 19th Stations of the Cross

**Thanks to Those Who GoodSearch**

St. Therese Parish received a check from goodsearch.com for almost \$40! That amounts to almost 3000 internet searches and more than \$500 in online purchases in only nine months. Imagine how much we can earn for an entire year! Thank you to those who use it regularly. Your support really does make a difference.

**Living Our Faith Prayer Cards**

Living Our Faith prayer cards are available in the small marked baskets on the tables at the entrances of the church. Please take one.

**Committee/Group Minutes for Parish Binder**

All Committee/Groups, Please Note! A three-hole punch is now available next to the green binder that contains all our parish committees/groups minutes. For your convenience, simply use that three-hole punch and place two copies of your minutes in the binder. No need to leave minutes in the Parish Office to get the holes punched! Thanks for your cooperation!

**Reducing Global Warming, Continued**

Run your dishwasher only with a full load. Use the energy-saving setting to dry the dishes. Don't use heat when drying. This will reduce carbon dioxide by 200 pounds a year.

Wash clothes in warm or cold water, not hot. Carbon dioxide reduction for two loads a week will add up to 500 pounds a year. Turn down your water heater thermostat to 120 degrees. Each 10-degree reduction will reduce carbon dioxide by 500 pounds a year.

**Living Our Faith Initiative**

**Living our Faith** is an initiative launched by the Archdiocese of Milwaukee, that 1) invites people to Meet Christ; 2) teaches people to Know Christ; and 3) inspires people to Live Christ by serving Him and others. **Catholic Knights presents "Living Our Faith with Archbishop Timothy Dolan"—a weekly 30-minute television program that shares inspirational and informational stories from across the archdiocese.** It airs on Saturdays on WISN TV at 12:00 noon through March (except Saturday, March 29th) and on Time Warner Cable's Wisconsin on Demand, Channel 1111.

### Dear St. Therese Congregation,

“You understand life is fragile, growth is unpredictable, and the harvest always waiting.”

Thank you for making the lives of those whom we serve less fragile, their growth more predictable, and the harvest sooner. Your contribution of Christmas gifts that were given to “our” children and families is very appreciated and needed.

We are blessed to have your support and I would ask that you pass on our thanks to all who contributed to this effort.

Sincerely,

*Alden L. Luzi*

Director of Development  
Agape Community Center

### Dear Parishioners:

Thank you very much for your donation to our “Caps for Kids” program.

We take many things for granted — all the little details of our daily life. Something as little as hats, gloves, and scarves that keep us warm often escape our attention — until we forget them. Many kids in our community do without, not because they forgot them, but because they simply do not have them. By helping these children in our midst, you are showing once again that there are still people who care — a message that surely gets across to the recipients. And, in that wonderful dynamic of helping, both you and they are warmed. Thanks for choosing this cause as your charity.

*Rita Cannestra*

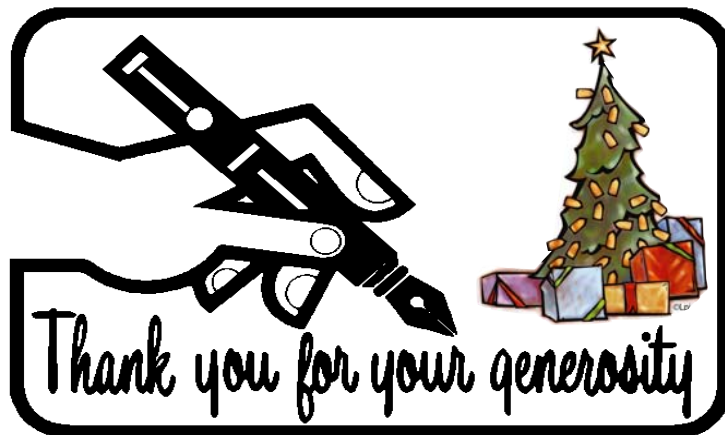
President, Milwaukee Council  
St. Vincent dePaul Society

### Dear St. Therese Parish Community:

On behalf of the staff, volunteers, women and children of the Cathedral Center, thank you so much for your support. The contribution made by your parish community is most generous! Please extend our warmest appreciation and humble gratitude to all of your parish community for their thoughtful support. Truly—what a treasured example of the meaning of community participation.

Support such as yours has become even more crucial to the Cathedral Center as we face significant loss in public funding for 2007-2008. As demand for homeless and emergency shelter services continue to rise — up 35% in our Center since 2004 — we will do whatever we are able to provide the same level of service currently provided to homeless women and families.

We have much to be proud of — including the direct placement of 211 families and 68 single women into permanent housing, their own homes, in 2006. We have also launched a new collaborative relationship with the Guest House of Milwaukee, in which we were able to place 10 families and 7 single women into permanent and



supported housing. This program reached capacity in just one month of operation. Endeavors such as this would be impossible without support such as yours. Thank you.

Together in service,

*Donna Rongholt-Migan, J.C.S.W.*

Executive Director  
The Cathedral Center

### Dear St. Therese Parish:

The Saint Vincent de Paul Society of Milwaukee would like to thank you for the many donations that were made during our December Furniture Drive. The drive was very successful. During this time of the year when the donations slow down, the store has received a large range of furniture items to help those in need.

*Cindy Friede*

St. Vincent dePaul, Milwaukee

### Dear Giving Tree Volunteers,

The residents of Family House and the youth involved in programming wish to thank you for making the Christmas Season of 2007 one worth remembering.

Perhaps you gave your time, perhaps you bought gifts, perhaps you made a monetary donation, or perhaps you helped decorate on that frigid cold Saturday in early December. All of us at Family House want you to know that your kindness is always appreciated.

It would be impossible for Family House to offer the level of care to our residents and aid to our community without the support of compassionate people such as you. As we move forward into another year, Family House would like to say Thank You once again, as we hope for your continued support.

Wishing you peace, good health, and prosperity,

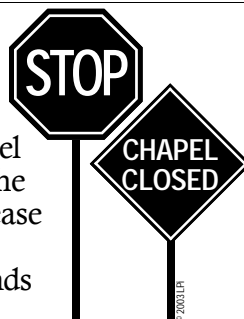
*Vicky Edwards*

Community Outreach Coordinator  
Family House, Inc.

### Attention: Morning Mass and Prayer Attendees:

#### Chapel Entrance Closed Weekdays

Please cooperate with our efforts to reduce our liability during the snow/ice season. Please note that both the Chapel doors (both from the inside and outside) are closed during the weekdays, regardless of the current weather conditions. Please use the Lobby entrance and proceed through the Sacristy to enter the Chapel. Our insurance for our building and grounds costs the parish approximately \$6,000 per year, and we are trying to keep insurance costs down. Last year the parish processed two insurance claims for persons who fell on our property. The out of pocket cost to the parish was approximately \$1,000. You can help us save money and avoid further expenditures by cooperating with this request. Thank you!



### New Email Addresses for Parish Staff

The St. Therese Parish Staff have all new email addresses! After years of using the email provided by the archdiocese, we have decided to switch to addresses that match our website address. They are faster, more user-friendly, and have more features available that will make Parish Office life easier. From now on, all of our addresses will end with @sainttheresemilwaukee.org. Please see the front of the bulletin for each staff member's specific address. The old archmil emails will be phased out, so you are encouraged to please update your address books, and begin using the new ones with the very next email you send.

### Excellence in Faith Formation Speaker Coming to Saint Therese

On Tuesday, January 22nd, from 9:00AM to 12:30PM, national speaker and author, Bill Huebsch will be at St. Therese Parish. His area of expertise is Lifelong Faith Formation and will discuss the many facets of implementing and improving catechesis and spiritual development of the entire parish. If you would like to attend this morning program, please contact Cathy Smith in the Parish Office or Annette Basaldua at [basaldauaa@archmil.org](mailto:basaldauaa@archmil.org) or (414) 758-2201.

### Looking Ahead to Ash Wednesday—The Beginning of Lent!

Lent begins in a few weeks with the celebration of Ash Wednesday on February 6th. Two liturgies will be celebrated—8:00AM and 6:30PM. The distribution of ashes takes place after the Liturgy of the Word at mass.

### Is It St. Therese-Milwaukee, St. Theresa-Eagle or St. Therese-Kenosha?

There are several parishes named "St. Therese" in the Archdiocese of Milwaukee. Please check carefully for the city location when reading announcements for snow closings on TV or listening to the radio. Recently, there was a snow/ice closing for St. Therese-Eagle that was mistaken as St. Therese-Milwaukee. Please note that, during the weekdays, the Parish Office closes when Milwaukee Public Schools closes.

### All Archdiocesan Planning Process Documents Available

Father Jim Connell's full set of five documents regarding Archdiocesan Planning Process is available to all. You can access all of Father Jim's documents on the "News & Events" page of our own website. Also, the most recent copies are available on the tables at the entrances of the church or call Courtney Falk in the Parish Office and request that a set be mailed to you.

### Parish Council

1st Monday of Month at 7:00PM

#### Chairperson

Kathy Hubrich (414) 259-1961

#### Vice-Chairperson

Judy Dietz (414) 607-0681

#### Trustee

Jim Balliet (414) 257-0339

#### Trustee

Mari Pavleje (414) 545-2733

#### Secretary

Suzanne Goodacre (414) 475-5062

Barb Gritzmacher (414) 774-1396

Chuck Jagemann (414) 453-5280

Alice Kennedy (414) 771-8147

Diane May (414) 476-6238

Doug Sedlar (414) 258-3996

**Greater Tosa  
Interfaith**

(414) 453-5750

**Saint Vincent  
de Paul**

(414) 462-7837

### Federal Privacy Regulation — HIPAA (Health Insurance Portability & Accountability Act)

Prohibits all hospitals from informing churches of a patient's presence unless the patient gives permission for the hospital to do so. If you are admitted to a hospital and would like remembrance in prayer or a pastoral visit, please call Dr. Guliano in the Parish Office.

**Please remember  
Saint Therese Parish  
in your will !**

**Bulletin deadline:**

Monday, 8:30AM

**Announcement deadline**

Thursday, 3:00PM

*All submissions must be in writing; email preferred.*

### Welcome to Saint Therese Parish Community!

If you are not currently registered and wish to join the Parish, please complete this form and place it in the collection basket or send it to the Parish Office, 9525 West Bluemound Road, Milwaukee, WI 53226. The full registration form will be mailed to you, or if you prefer, you can download and print the form from the "Contact Us" page on our website.

Name \_\_\_\_\_ Phone (\_\_\_\_) \_\_\_\_\_ Email \_\_\_\_\_  
Address \_\_\_\_\_ City, State, Zip \_\_\_\_\_