



Saint Theresese Parish

9525 W Bluemound Rd, Milwaukee, WI 53226

Phone (414) 771-2500 • Fax (414) 771-2410

sainttheresemilwaukee.org • info@sainttheresemilwaukee.org

We are Saint Theresese Catholic Church, a community of believers who walk together by faith in Christ Jesus and strive hand-in-hand to live as God's people.

November 9th, 2008

Parish Staff

Parish Director

Dr. Alexandra Guliano ext. 14
drguliano@sainttheresemilwaukee.org

Assisting Priest

Rev. Hugh Birdsall, SDS

Help-out Priest

Rev. Norm Oswald

Administrative Assistant

Courtney Falk ext. 11
courtney@sainttheresemilwaukee.org

Bookkeeper

Lisa Vallone ext. 17
vallonel@sainttheresemilwaukee.org

ChristCare Minister

Barbara Heinz ext. 13
bhheinz@sainttheresemilwaukee.org

Pastoral Musician

Elterine Jankowski-Biggers ext. 15
jankowe@sainttheresemilwaukee.org

Sterling Biggers, Parish Musician

Coordinator of Parish Catechesis

Cathy Smith ext. 20
cathy.smith@sainttheresemilwaukee.org

Building Services Senior Technician

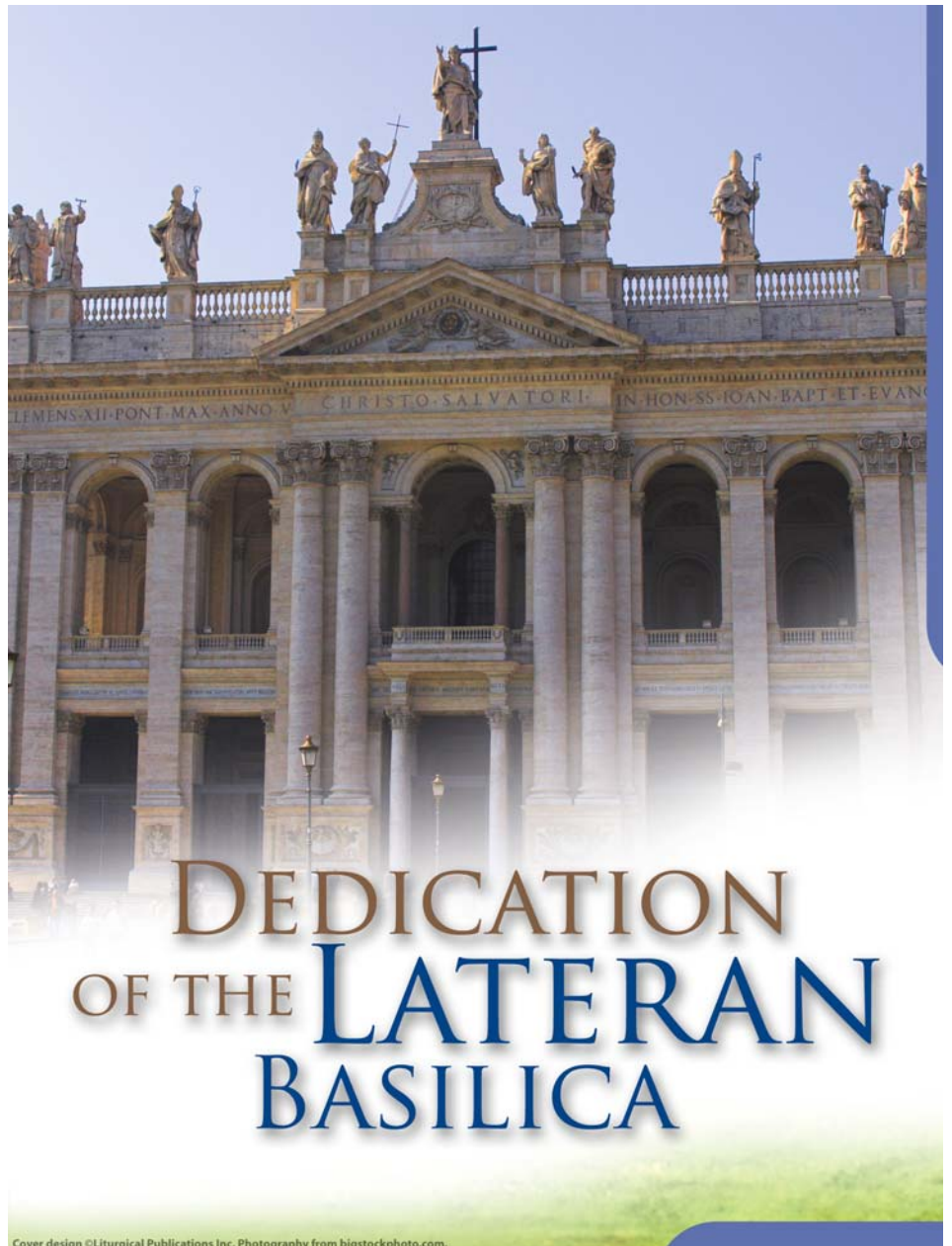
Mike Davis ext. 16

Building Services Associate

Lisa Hartay ext. 16

Parish Emergencies

(414) 771-2500 — listen for instructions



Cover design ©Liturgical Publications Inc. Photography from bigstockphoto.com.

Mass Schedule

Saturday: 5:00PM

Sunday: 8:00AM & 10:00AM

Tuesday: 7:30AM

Liturgy of the Word with Communion:

Wednesday, Thursday, Friday: 8:00AM

See inside for Holy Day Schedules

Reconciliation: 4:15PM — 4:45PM

1st Saturday of the Month

Anointing of the Sick:

2nd Full Weekend of the Month
Following Each Mass

All Other Sacraments:

Please call the Parish Office
Preparation can take six months or more

Office Hours

Monday, Tuesday, Thursday:

8:30AM — 4:00PM

closed 12:00PM — 12:30PM

Wednesday:

12:00PM — 7:30PM

closed 4:00PM — 4:30PM

Friday: 8:30AM to 12:00PM

From the Desk of the Parish Director

◆ Last week, a second 2008-2009 Parish Support Commitment Mailing went out to all registered parish members who have not yet responded to our annual parish support effort.

To date, 260 units/families, or 50% of our membership, have responded. Thanks to all who have taken the time, thought, and prayer for the strengthening and viability of our parish community.

Our records show that 300 or approximately 60% of our parish membership financially support the parish by making donations in contribution envelopes or through checks. We have no figures, of course, for those who choose to contribute anonymously. We do know that there a number of persons who do prefer to give anonymously, and we respect their decision.

If you have not returned your 2008-2009 Parish Support Commitment Mailing, please do so by November 15th. We would like to complete our effort by that date. Thank you, again, for your time, thought, and prayer.

◆ We received some very good news this week. We have reached our 2008 Catholic Stewardship Appeal goal of \$32,000 and have exceeded it by \$248, for a total of \$32,248 contributed by 189 donors from our parish community. Thanks to all who contributed to this appeal.

◆ We will continue to pray for and to help those in need through our parish ministries, especially those who have been adversely affected by the economic stresses of the past months. And, our Finance/Administration Committee, Parish Council, and Parish Staff, commit to be wise stewards of the gifts entrusted for the good of our parish.

God be with you!

Dr. Alexandra Guliano



On November 2nd, we initiated the two newest members of our Christian community: Alexander

James Holmes and Diana Elaine Holmes, the children of Marjorie and Michael. Alex and Diana are regular assistant ushers at the 8:00AM Mass.

Reminder to All Ushers

Please remember to lock the outer and inner church doors after mass before you leave. Please help keep our building secure.

Do Not Leave Your Belongings Unattended

Unfortunately, we had another theft in church. A wallet from a purse was taken. Please do not leave your purses, bags, backpacks, etc. unattended when you are in church. Please report any suspicious activity to an usher.



Lord, I enter into this day giving all my love to You. Bringing praise and glory with all I say and do. The sun is warm upon my face, reminding me of Your love as I put my life into Your hands, sending praise to You above. It is the desire of my heart to serve You every day. Use me as a willing vessel. My whole life through I pray.

You are my rock and my fortress; for Your name's sake lead and guide me. Psalm 31:4

Please remember the following in your prayers:

Margaret Anderson * Vicky Anderson * Lenore Black * Dee Blom
Art Bonk * Bernice Brah * Gianna Capecci * Shirley Gradisnik
Janice Corak * David Dane * Judy Dietz * Alberta Duckhorn
Frank Eskra * Tom Gaughan * Lynn Gordon * Chuck Hillyer
Merle Weber * Neil & Mary Jane Guliano * Anastasia Hubbard
Marcella Kozuh * Christine Hutchins * Judy & Andy Islo
Garnet Jankowski * Joachim Family * Marie Kneifl
Ken Knollenberg * Ann Farell * Ann Lackovic * Lynne Lyste
Ceil Maccani * Millie Metz * Aiden & Conner McKenna
Andy Moehr * Laverne Mucci * Tom & Glenda Nitka
Brayden Ramus * Gerry Roberts * Gladys Sachse * Fran Schmidt
Frank & Sylvia Schaffer * Barbara Schmitz * Carlene Siever
Virginia Weber * Susan Sinks * Danny Stabo * Marion Stabo
Mary Stoke * Mary Lu Topple * Olga Valdovinos
Irene Van Eyck * Harold Vanden Heuvel * Deanna Zychowski

Parish Council Decision Regarding the Festival

Thanks to all parish members who attended the Listening Session last Sunday, November 2nd and who submitted written comments for the council's consideration. After reflection, prayer, and deliberation, the Parish Council took a voice vote to determine whether or not to continue to Festival. The results were eight—no; one—yes; and one—abstain. The final decision is that there will not be a festival in 2009.

A special thank you dinner for all who have worked and volunteered for the festival (at any festival in St. Therese history), sponsored by the Parish Council, will be held on Friday, January 16th, 2009. Please watch the bulletin for details.

Congratulations to Judy Deysach!

Vatican II Award Recipient for Service to the Church

For the past 25 years, Judy Deysach has served the Church and community with special skills and sensitivity for teenagers and youth. As a Director of Youth Ministry at Holy Apostles Parish, New Berlin, she has provided spiritual directions, the teachings of the Church, and opportunities for community service to youth and adults alike. Her primary focus has been with high school students ages 14-19. Years of experience with this age group have given Judy the expertise to be able to offer counsel to the Archdiocese of Milwaukee for crisis intervention in Catholic secondary schools.

Judy, and her spouse Jim, are longtime members of St. Therese Parish. Jim also ministers in the Church as Director of Administrative Services for St. Alphonsus Parish in Greendale.

Congratulations, Judy! Your parish community of St. Therese is proud of you!

Congratulations!



Parish Events for the Week

Sunday, November 9th

Catechesis Sunday

9:00AM Blood Pressure Screening (CH)

9:15AM St. Therese Choir (CH)

Monday, November 10th

No Meetings Scheduled

Tuesday, November 11th

8:30AM Bible Study Group (STR)

3:30PM Canticle Choir (MC)

7:00PM Usher Society (MC)

Wednesday, November 12th

7:30PM St. Therese Choir (CHP)

Thursday, November 13th

11:30AM 55+ Social Club (HH)

Friday, November 14th

No Meetings Scheduled

Saturday, November 15th—Sharing Weekend

2:00PM Women's Retreat (MC)

4:15PM Canticle Choir (CH)

Sunday, November 16th—Sharing Weekend

No Meetings Scheduled

CH=Church, CHP=Chapel, GLP=God's Littlest Place, GN=Good News Gathering Place, HH=Heck Hall, KIT=Heck Hall Kitchen, LIB=Library, MC=Miriam's Corner, RR=Raphael Room, STR=St. Therese Room

55+ Social Club

The luncheon hosted by the Montessori School is this Thursday, November 13th at 11:30AM in Heck Hall. Reservations are **required** by Friday, November 7th. Your reservation and money for the Annual Christmas Party at Alioto's on Wednesday, December 17th are due on November 13th. Call Barb in the Parish Office to make a reservation.

Note from the Green Team

You can recycle used and unbroken compact fluorescent light (CFL) bulbs at any Home Depot store. This free service gives you an option for making an environmentally conscious decision. Just take them to the Returns Desk and give them to a store associate. Home Depot takes care of it from there. This is an easy way to be a better steward of our earth.



GoodSearch
You search... We give!

Next Weekend is Sharing Weekend

The School Sisters of Notre Dame in Kenya share in a special way the charisma of the congregation. SSND strives to express our mission to make one through ministry directed toward education - enabling persons to reach the fullness of their potential. We are especially sensitive to youth, women and the needs of the poor. Our call to serve those in greatest need opens new ways of ministry in today's world.

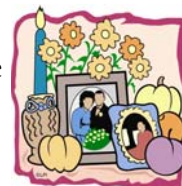
At the request of the late Bishop Mugendi, four SSNDs went to Kenya in 1973 to start an upgrading center for the African Sisters who lacked basic literacy in English and other academic subjects. That ministry has expanded to include running two girls secondary boarding schools in the rural area: St. Theresa in Gekano, St. Francis in Kiptere. They serve about 550 young women. Sisters also teach in primary schools. In Nairobi a sister directs a CPE course for hospital ministers. The current needs have called us to the Oyugis AIDS project and the Nymbani's home for orphaned children with AIDS. We also have a sister working with the women in prison and with social justice issues. So many calls!

In 1999, we began a formation program for women who were interested in joining us in our mission. Today in Kenya we have 5 expatriates and 21 Kenyan School Sisters of Notre Dame. Our ministry will continue in the hands and hearts of these dedicated School Sisters of Notre Dame.

Thank you for again being generous to our Sharing Recipient.

Wall of Remembrance—Month of All Souls

November is the month of remembrance for all who have died. Our parish Wall of Remembrance is displayed throughout the month. Please place pictures of your loved ones on the wall so that we can remember them at every Eucharist we celebrate throughout the month.



Congratulations Jean Marie Weber!

Jean Marie Weber, Coordinator of Pastoral Formation at Cardinal Stritch University's Saint Clare Center for Ministry Formation will receive the 2008 Vatican II Award for Service in Education.

Jean Marie is being honored for her years of service in education within the Archdiocese of Milwaukee in the Central Offices; in parishes and schools as a teacher and director of religious education; as president of the National Conference of Catechetical Leadership; as Director of Certification at the United States Conference of Catholic Bishops Commission on Certification and Accreditation; and as Coordinator of Pastoral Formation at Cardinal Stritch University in the Saint Clare Center for Ministry Formation.

A Good Read from the St. Therese Library

90 Minutes in Heaven by Don Piper (paperback)

Have you ever wondered what it's like to be in heaven? Pastor Don Piper was dead—without a pulse—for 90 minutes following a horrific car accident. In Chapter 2 Pastor Piper recalls his joyous

experience of being in heaven. The rest of the book is his personal quest to understand why a merciful God would send him back to a life of constant pain. If you've ever doubted the power of prayer, read Don Piper's personal account in this book. Check our library, in the lobby outside the Parish Office. We have a wealth of books, tapes and DVDs. There's a kid's section, too!

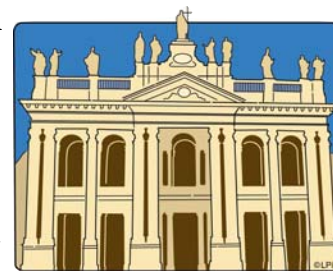


Readings for the Week of November 9th

Sun: Ez 47:1-2, 8-9, 12; 1 Cor 3:9c-11, 16-17;
 Jn 2:13-22
 Mon: Ti 1:1-9; Lk 17:1-6
 Tue: Ti 2:1-8, 11-14; Lk 17:7-10
 Wed: Ti 3:1-7; Lk 17:11-19
 Thu: Phlm 7-20; Lk 17:20-25
 Fri: 2 Jn 4-9; Lk 17:26-37
 Sat: 3 Jn 5-8; Lk 18:1-8
 Sun: Prv 31:10-13, 19-20, 30-31; 1 Thes 5:1-6;
 Mt 25:14-30

What connections exist between the feast of the Dedication of St. John Lateran and our current national elections?

The Roman basilica of St. John Lateran is the home church of the pope, the bishop of Rome. The Emperor Constantine gave the church to Pope Sylvester as his residence in 324. St. John Lateran is the pope's cathedral, and by extension, the "Mother and Head of all the Churches in the city and of the world." The universal church celebrates this feast to manifest unity among all churches, as well as unity with Rome.



The merging of church and state had positive and negative results for the church. Accepting gifts and becoming part of the empire's power structure brought with it the undisclosed obligation to become supporters of the empire. Many felt that the church could no longer be fully dedicated to and impartial in proclaiming Gospel values. Could it continue to speak truth to power? How would the church react when its power and wealth conflicted with Gospel values?

Today, the same issues challenge all Christians. The Gospels call us to proclaim God's agenda and not any political or religious party's agenda. Christians are called to vote in line with complete Gospel values. Concern for God, self, creation, and others must be the Gospel agenda we espouse. See the Bishops' web site: www.faithfulcitizenship.org/.

As we move forward under a new agenda and leadership, how will you continue to use Gospel values to speak truth to power?

©2008 Liturgical Publications Inc, New Berlin, WI 53151

Mass Intentions for the Week

Tuesday, November 11th

7:30AM †Abby Bunzel

Saturday, November 15th

5:00PM Gustav Schmidt

Sunday, November 16th

8:00AM †Richard Tandetzke

10:00AM People of St. Therese Parish and
 †Clarice Sklba

CHURCH SUPPORT

Thank
 you!

Envelopes & Offertory Last Weekend
 \$6148.62

All Saints Day
 \$371.00

All Souls Day
 \$440.00

Donations to St. Vincent dePaul Society

Thanks to all who regularly contribute financially for the support of the St. Vincent dePaul Society. Please note that if you donate cash in donation boxes or in the special envelopes in the pews, it goes directly to the ministries of our parish St. Vincent dePaul Society. If you donate by check, please make out the check directly to "St. Vincent dePaul Society" rather than St. Therese Parish. Any checks for St. Vincent dePaul donated through our collection basket will be given directly to our parish conference of St. Vincent dePaul. Thanks very much!

MICAH

The MICAH Immigration Committee and similar committees in Wisconsin and across the United States recognize that the current national immigration system is totally broken. America needs real solutions, including a path to citizenship for undocumented immigrants, family unity, worker protections and strengthened human rights and civil liberties for all Americans. We call for the next president and Congress to introduce immigration reform legislation in the first 100 days of 2009. The MICAH core team invites you to participate in this effort by signing a pledge found at the tables at the entrances to the Church. Boxes for the completed pledge forms are also at the tables.

Mount Mary College's Hunger Banquet

This holiday season, Mount Mary College invites you to experience Thanksgiving in a whole new way. On Monday, November 24th from 4:00—6:00PM, you are cordially invited to experience a *Hunger Banquet*. The cost is a mere \$3 or a non-perishable food donation. Mount Mary is located at 2900 N Menomonee Rivery Pkwy, in Milwaukee. Please park in the 92nd St Lot and follow signs to the North Dining Hall. Please contact Krystal Klapatch with questions at (414)258-4810 x265 or klapatch@mtmary.edu.

Dan Schutte in Concert

Blessed Savior Parish (8545 W Villard Ave in Milwaukee) is pleased to announce an evening of music and reflection with Dan Schutte, renowned composer, on Friday, November 21st at 7:00PM. A native of Wisconsin, Dan is one of the best-known, most prolific and influential composers of music for the liturgy today. The cost is \$10 at the door. For more information, contact Judy Adrian at (414) 464-5033 or adrianj@archmil.org.



Free Concert

School Sisters of Notre Dame, Milwaukee Province Notre Dame of Elm Grove, 13105 Watertown Plank Road, Elm Grove. The Notre Dame Recorder Consort will perform *The Recorder in History* on Sunday, November 16th. Free admission. Please call the School Sisters of Notre Dame at (262) 782-1450 with any questions.

Electrical Repairs Update, Cost, & Hopefully, No More Power Outages!

Recently, we had to repair the large transformer pole and components which deliver electricity to both St. Therese and Milwaukee Montessori School. Thanks to Sr Judy Miller, Interim Parish Director, and Mari Pavleje, Trustee-Secretary, we were able to negotiate an equitable agreement with Debbie Mather, Business Manager for Milwaukee Montessori School, for the payment of this repair.

The total cost of the project, awarded to Nelco Electric, was \$22,150 paid in the following manner— St. Therese cost: \$8,417 (32%); Milwaukee Montessori School cost: \$13,733 (68%).



Our cost, \$8,417, is an extraordinary expense for the parish. While we will pay our portion by using funds from our Building Reserve Account, we welcome any special donations of any amount to help defray the cost of this repair. Currently, our Building Reserve Account has a balance of \$20,019. When we reserved this fund six years ago, the balance was \$100,000. Extraordinary repairs and maintenance to our building has cost us approximately \$13,400 per year for the past six years—a total of approximately \$80,000.

As you can conclude, we need to replenish our Building Reserve Account in order to keep ahead of repair costs. Please consider an extra one-time donation to help defray the cost of this repair. 200 gifts of \$30 would mean that we would draw only about \$2,500 from our Building Reserve Account. 200 gifts of \$45, and we would not have to withdraw any money from the Building Reserve Account. Please know that a donation of **any amount** is much appreciated.

Men's and Women's Retreat

St. Catherine's Parish (51st and Center St) and St. Therese are joining forces to offer both Men's and Women's Retreats. The Men's Retreat will be on Thursday, November 13th from 6:00-9:00PM at St. Catherine's Parish. The Women's Retreat will be on Saturday, November 15th beginning at 2:00PM and ending in time for the 5:00PM Mass here at St. Therese. The fee for each of these retreats is \$5.00. For more information contact Cathy Smith in the Parish Office.

Pot Luck Dinner

Are the costs of food and entertaining getting you down? Then come and join us for the first of four Pot Luck Dinners scheduled between now and spring. The dinner will be held on Friday, November 14th from 6:00 — 9:00PM. Please use the coupon below or register on the News & Events page of our website to let us know how many will be coming, and how you can help to make this community event happen. If you have any questions, please feel free to contact Elterine or Cathy in the Parish Office. The deadline to register is Monday, November 10th by 4:00PM.

Pot Luck Dinner Reservation—Due by November 10th* **LAST CHANCE!**

Family Name _____ Phone Number (____) _____

Email Address _____ Number Attending _____

I can help set up for this event.

I can help clean-up after this event.

**Please note that by registering to attend, you are agreeing to bring a dish to pass.*

Parish Council

1st Monday of Month at 7:00PM

Chairperson

Kathy Hubrich (414) 259-1961

Vice-Chairperson

Alice Kennedy (414) 771-8147

Trustee

Jim Balliet (414) 257-0339

Trustee

Mari Pavleje (414) 545-2733

Secretary

Jesse Stringer (262) 442-3710

Darian Borst (414) 461-8030

Judy Dietz (414) 607-0681

Barb Gritzmacher (414) 774-1396

Chuck Jagemann (414) 453-5280

Janet Krebs (414) 774-9113

Diane May (414) 476-6238

Richard Sanger (414) 425-2028

Doug Sedlar (414) 258-3996

**Greater Tosa
Interfaith**

(414) 453-5750

**Saint Vincent
de Paul**

(414) 462-7837

Federal Privacy Regulation — HIPAA (Health Insurance Portability & Accountability Act)

Prohibits all hospitals from informing churches of a patient's presence unless the patient gives permission for the hospital to do so. If you are admitted to a hospital and would like remembrance in prayer or a pastoral visit, please call Dr. Guliano in the Parish Office.

**Please remember
Saint Therese Parish
in your will !**

Bulletin deadline:

Monday, 8:30AM

Announcement deadline:

Thursday, 12:00 NOON

All submissions must be in writing; email preferred.

Welcome to Saint Therese Parish Community!

If you are not currently registered and wish to join the Parish, please complete this form and place it in the collection basket or send it to the Parish Office, 9525 W Bluemound Rd, Milwaukee, WI 53226. The full registration form will be mailed to you, or if you prefer, you can download and print the form from the "Contact Us" page on our website.

Name _____ Phone (____) _____ Email _____

Address _____ City, State, Zip _____